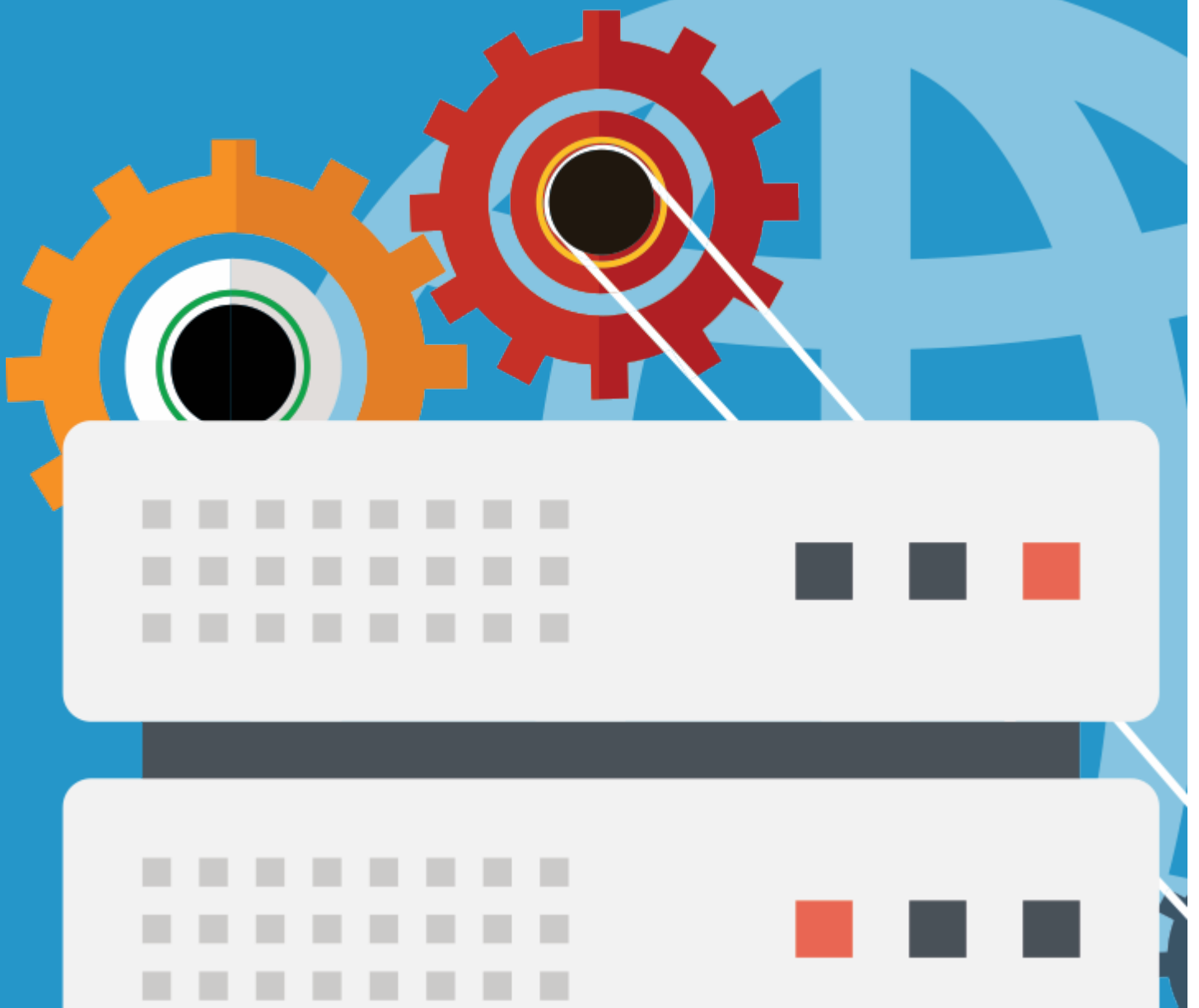


# DEDICATED SERVERS

WITH  
THOHOST





# TABLE OF CONTENTS

**WHY CHOOSE A DEDICATED SERVER? 3**

---

**DEDICATED SERVER ADVANTAGES 4**

---

**DEDICATED SERVERS WITH THOUHOST 5**

---

**SERVICE GUARANTEES 6**

---

# WHY CHOOSE A DEDICATED SERVER?

If you aim to build a successful online business, you should choose neither a shared hosting account (because you will soon outgrow the available resources) nor a Virtual Private Server (because it would just be a stopgap solution). What you really need is a dedicated server – the only hosting environment that can guarantee you absolute hardware and software freedom, full root access, rock-solid, bullet-proof network connectivity and unmetered CPU resources at the same time.

A dedicated server will allow you to install any OS that you want and to add more RAM or more disk drives to the server without having to upgrade like you would have with any other hosting solution. Hardware-wise, a dedicated server is the only platform that allows you to set up a RAID array, provided that you have more than one disk drive.

## WHY ThouHost:

- 99.9% Network Uptime
- 24/7 Technical Support
- 1-hour Response Time
- Full Root Access
- Free Bonuses
- A US Data Center
- No Setup Fees



# OUR ADVANTAGES



## DEDICATED RESOURCES

You will have complete and unrestricted access to the physical machine and all its resources. Since no one else will be using the server except you, all CPU, storage, RAM, etc. resources will be at your sole disposal. This makes dedicated hosting the very best possible.



## EXPANDABLE HARDWARE

One of the most important benefits of dedicated servers over virtual private servers or shared hosting accounts is that you can add different hardware parts without having to upgrade your whole server to a more powerful package.



## CHOOSE YOUR OS

You can pick any of the Operating Systems (CentOS, Debian or Ubuntu) that we are currently supporting and have it installed during the server setup process itself. But since this is a dedicated machine, you will be able to install any other OS at a later time as well.



## CHOOSE YOUR CP

The Control Panel is the visual interface via which you can control your dedicated server. With ThouHost, you can choose between cPanel, DirectAdmin and our very own Hepsia Control Panel, which is available for free.



## ROOT ACCESS

If you pick cPanel or DirectAdmin, or if you choose not to install any Control Panel on your dedicated server, you will get full root access. This will give you absolute control over the machine, as you will be able to modify every setting and install additional software.



# DEDICATED SERVERS

## INTEL ATOM SERVERS

|         | CPU                                  | RAM  | DISK SPACE           | MONTHLY TRAFFIC | PRICE             |
|---------|--------------------------------------|------|----------------------|-----------------|-------------------|
| Atom 2c | Intel Atom D525<br>1.8 GHz (2 cores) | 4 GB | 2x240 GB SATA<br>SSD | 10 TB           | <b>\$45.00/mo</b> |

## INTEL XEON SERVERS

|                   | CPU   | RAM    | DISK SPACE           | MONTHLY TRAFFIC | PRICE              |
|-------------------|---|--------|----------------------|-----------------|--------------------|
| Xeon D            | Xeon D-1541<br>2.1 GHz (8 Cores)              | 16 GB  | 2x240 GB SATA<br>SSD | 10 TB           | <b>\$120.00/mo</b> |
| Xeon E3 v3        | Xeon E3-1240L V3<br>2.00 GHz (4 Cores)        | 8 GB   | 2x480 GB SATA<br>SSD | 10 TB           | <b>\$95.00/mo</b>  |
| Xeon E3 v5        | Xeon E3-1240L V5<br>2.10 GHz (4 Cores)        | 16 GB  | 2x240 GB SATA<br>SSD | 10 TB           | <b>\$95.00/mo</b>  |
| Xeon E5 2620 v3   | Intel Xeon E5-2620 v3<br>2.40 GHz (6 Cores)   | 16 GB  | 2x240 GB SATA<br>SSD | 20 TB           | <b>\$120.00/mo</b> |
| Xeon Scalable 8c  | Xeon 4108/similar<br>2.1 GHz (8 Cores)        | 32 GB  | 2x240 GB NVMe        | 10 TB           | <b>\$160.00/mo</b> |
| Xeon Scalable 16c | Xeon 6130/similar<br>2.1 GHz (16 Cores)       | 64 GB  | 2x480 GB NVMe        | 15 TB           | <b>\$240.00/mo</b> |
| Xeon Scalable 24c | Xeon 5220R/similar<br>2.3 GHz (24 Cores)      | 64 GB  | 2x480 GB NVMe        | 20 TB           | <b>\$270.00/mo</b> |
| Xeon Scalable 48c | 2x Xeon 5220R/similar<br>2.3 GHz (48 Cores)   | 128 GB | 2x480 GB NVMe        | 20 TB           | <b>\$470.00/mo</b> |
| Xeon Scalable 6c  | Xeon 3204/similar<br>1.9 GHz (6 Cores)        | 16 GB  | 2x240 GB NVMe        | 10 TB           | <b>\$115.00/mo</b> |
| Xeon Scalable 10c | Xeon 4210/similar<br>2.2 GHz (10 Cores)       | 32 GB  | 2x480 GB NVMe        | 10 TB           | <b>\$175.00/mo</b> |
| Xeon E5 2650L v4  | Intel Xeon E5-2650L V4<br>1.70 GHz (14 Cores) | 32 GB  | 2x240 GB SATA<br>SSD | 20 TB           | <b>\$160.00/mo</b> |
| AMD Epyc 64c      | AMD Epyc 7702/similar<br>2 GHz (64 Cores)     | 256 GB | 2x960 GB NVMe        | 20 TB           | <b>\$600.00/mo</b> |

Xeon E5 2630L v4

Intel Xeon E5 2630L v4  
1.80 GHz (10 Cores)

32 GB

2x240 GB SATA  
SSD

20 TB

**\$140.00/mo**

# SERVICE GUARANTEES

To make your experience with us more stress-free, we have invested time and money to create a hosting environment that is both risk-free and reliable and at the same time does not hinder your future development in any way.

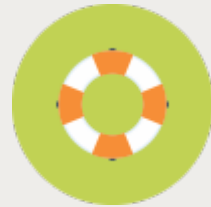
## SERVICE GUARANTEES



**No Setup  
Fees**



**99.9% Network  
Uptime**



**24/7 technical  
support**

Get a brand new dedicated server from ThouHost today and see for yourself why thousands of other customers have also put their trust in us.

**CHOOSE YOUR SERVER NOW**